

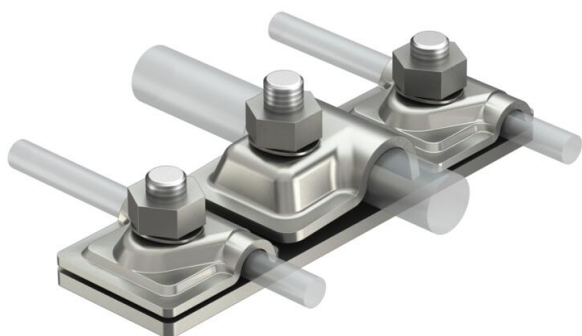
# Technical data sheet

## Connection plate for two isCon® cables

Item number: 5408028



Connection plate to connect two isCon® cables with interception rod Ø 16 mm.



**A2** Stainless steel

### Master data

Item number	5408028
Type	isCon AP2-16 VA
Description 1	Connection plate
Description 2	for two isCon cables
Manufacturer	OBO
Dimension	16x8-10mm
Material	Stainless steel, rustproof 1.4301
Smallest sales unit	1
Unit of quantity	Units
Weight	39,5 kg
Weight unit	kg/100 pairs
CO2 Footprint (GWP) Cradle-to-Gate	2,5555 kg CO2e / 1 Piece

# Technical data sheet

Connection plate for two isCon® cables

Item number: 5408028



## Dimensions



## Technical specifications

Connection	Round conductor
Lightning current carrying capacity	H1/150 kA
Fit	Rd 8-10 x Rd 16 mm