

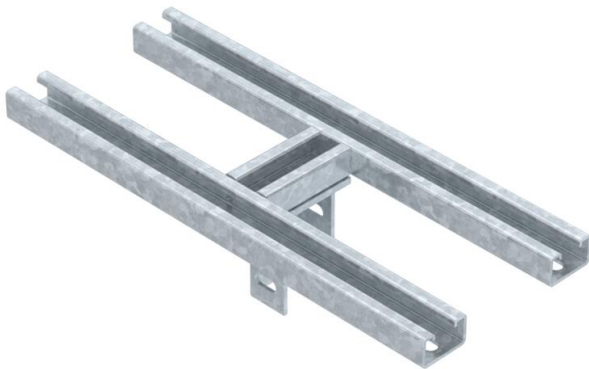
Technical data sheet

Head plate with two welded-on MS5030 profile rails, FT

Item number: 6349304



Head plate, heavy-duty version, with two welded-on MS5030 profile rails, to create suspended supports in connection with US 7 supports. Mounting on steel constructions with chuck jaws. Cable tray route parallel to the profile rails. Fastening material for US 7 support is included.



St

Steel

FT

Hot-dip galvanised

Master data

Item number	6349304
Type	KUS7 MS-2-500 FT
Description 1	Head plate
Description 2	for US 7 support
Manufacturer	OBO
Dimension	500mm
Colour	zinc
Material	Steel
Surface	Hot-dip galvanised
Surface standard	DIN EN ISO 1461
Smallest sales unit	1
Unit of quantity	Piece
Weight	375 kg
Weight unit	kg/100 pc.

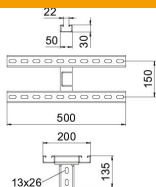
Technical data sheet

Head plate with two welded-on MS5030 profile rails, FT

Item number: 6349304



Dimensions



Length	500 mm
Width	200 mm
Height	135 mm
Dimension B	200 mm
Dimension L	500 mm

Technical data

Version for	Screw head plate
Suitable for ceiling fastening	yes
Suitable for panel fastening	no
Suitable for profile shapes	U profile
Rustproof steel, pickled	no
Angle range, max.	90 mm
Angle range, min.	90 mm